

Security Control System

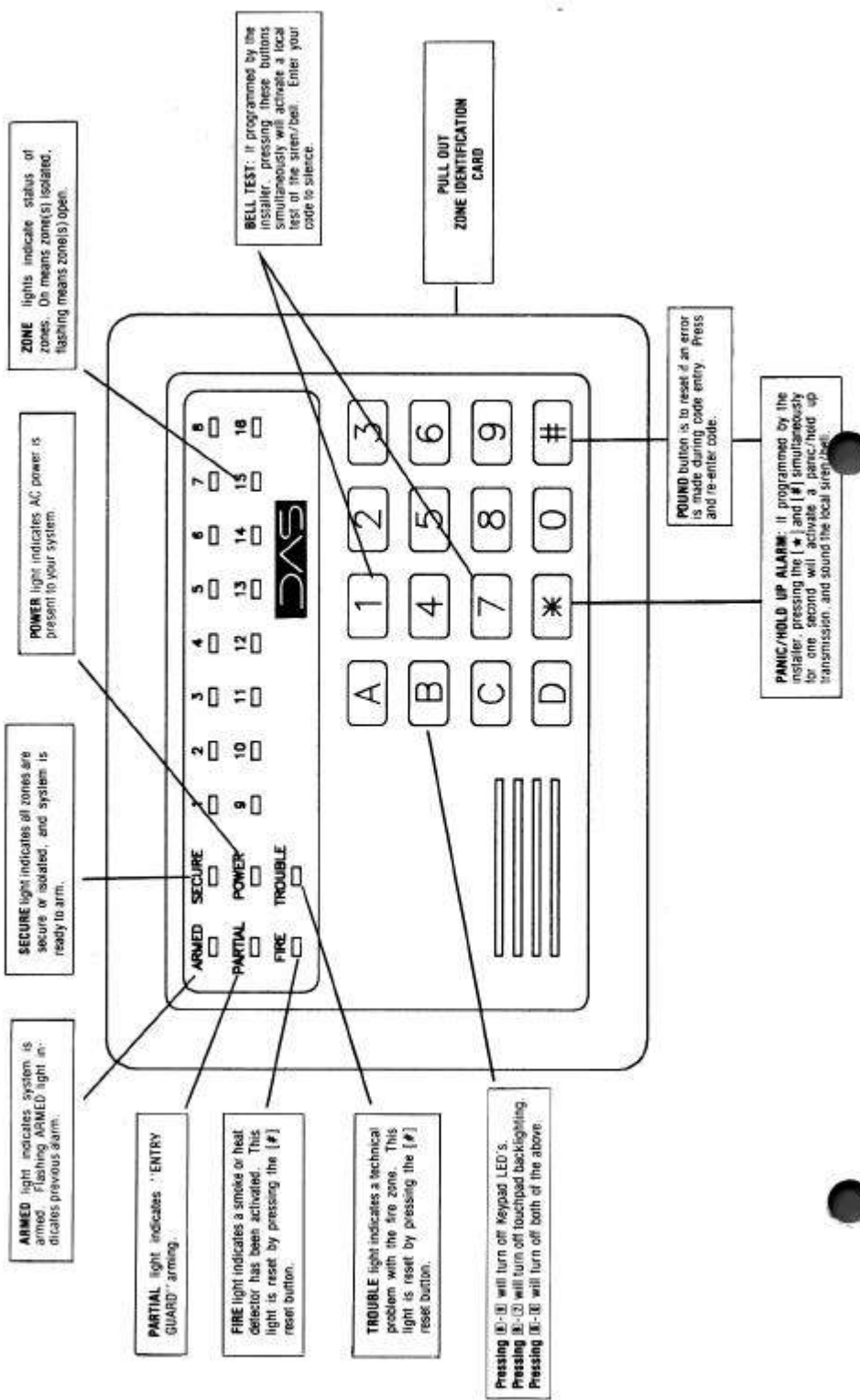
Operator's Manual



DIRECT ALARM SUPPLIES

300

S E R I E S



SECURITY SYSTEM NOTES

Installing/Service Company _____

For Service Call _____

AREA LISTINGS

Area 1 _____ Area 2 _____

Area 3 _____ Area 4 _____

SPECIAL CODES

"Quick Arm" Digit _____ "Entry-Guard" Digit _____ "Chime" Digit _____

ENTRY / EXIT DELAY TIMES

Exit Delay Time _____ Secondary Exit Delay Time _____

Entry Delay Time _____ Secondary Entry Delay Time _____

Entry-Guard Warning Time _____

ARM / DISARM CODES

Master Code / User #01 _____	Auxiliary Codes 02 _____
03 _____ 04 _____	05 _____ 06 _____
07 _____ 08 _____	09 _____ 10 _____
11 _____ 12 _____	13 _____ 14 _____
15 _____ 16 _____	17 _____ 18 _____
19 _____ 20 _____	21 _____ 22 _____
23 _____ 24 _____	25 _____ 26 _____
27 _____ 28 _____	29 _____ 30 _____

ZONE DESCRIPTIONS

01 _____	02 _____	03 _____
04 _____	05 _____	06 _____
07 _____	08 _____	09 _____
10 _____	11 _____	12 _____
13 _____	14 _____	15 _____
16 _____	17 _____	18 _____
19 _____	20 _____	21 _____
22 _____	23 _____	24 _____
25 _____	26 _____	27 _____
28 _____	29 _____	30 _____
31 _____	32 _____	

THIS MANUAL IS FURNISHED TO HELP YOU UNDERSTAND YOUR SECURITY SYSTEM AND BECOME PROFICIENT IN ITS OPERATION. ALL USERS OF YOUR SECURITY SYSTEM SHOULD READ AND FOLLOW THE INSTRUCTIONS AND PRECAUTIONS IN THIS BOOKLET. FAILURE TO DO SO COULD RESULT IN THE SECURITY SYSTEM NOT WORKING PROPERLY. THIS BOOKLET SHOULD BE KEPT IN AN ACCESSIBLE LOCATION FOR THE LIFE OF THE SECURITY SYSTEM. IF YOU DO NOT UNDERSTAND ANY PART OF THIS MANUAL YOU SHOULD NOTIFY YOUR INSTALLING COMPANY AND ASK FOR THAT SECTION OF THE MANUAL TO BE EXPLAINED FULLY.

The SECURITY CONTROL CENTER is turned on (ARMED) and off (DISARMED) by entering a 4 digit code into the Keypad Control, which is similar to a telephone keypad. The Keypad Control includes 22 lights and a built in electronic sounder. These provide specific information relating to the status of the security system which is described in this booklet. Understanding what the lights and sounds mean will help you to easily operate your system.

SO REMEMBER, READ THE ENTIRE MANUAL, AND, IF POSSIBLE PRACTICE ON THE KEYPAD CONTROL WHILE YOUR PROFESSIONAL INSTALLER IS AT YOUR BUILDING. IF YOU HAVE ANY QUESTIONS ASK YOUR INSTALLING COMPANY.

PLEASE KEEP IN MIND THAT THE LEVEL OF SECURITY YOU WILL OBTAIN WITH THIS SYSTEM RELATES SPECIFICALLY WITH TWO MAJOR FACTORS:

1. The quantity, quality, and placement of security devices attached to this system.
2. The knowledge you have of the security system and how that knowledge is utilized in a weekly test of the complete system.

YOU SHOULD BE AWARE OF THE FOLLOWING FACTS AND USE THEM WHEN PREPARING A SAFETY/SECURITY PLAN FOR YOUR HOME/BUSINESS.

1. Your security system is an electronic device and is subject to failure or malfunction. Do not rely on it as your single source of security.
2. Your system should be tested weekly.
3. Your system will not work without power.
4. Warning devices will need to be loud enough, wired correctly, and properly placed to provide notification of an alarm event.
5. Smoke and heat detectors may not detect heat and smoke in all situations.
6. Use qualified security professionals to select, install, and maintain your security system.
7. It may be possible to arm the security system without the backup battery connected. Your periodic test should be done with A.C. Power removed to verify the battery is connected and adequately charged.
8. Care should be taken to plug in and properly restrain the A.C. Transformer after testing.

PLEASE READ THE FOLLOWING INFORMATION AND INSTRUCTIONS CAREFULLY BEFORE OPERATING YOUR SECURITY CONTROL SYSTEM. IF YOU DO NOT UNDERSTAND ANY PORTION OF THIS MANUAL, OR IF YOU HAVE ANY QUESTIONS ABOUT YOUR SYSTEM CONTACT THE INSTALLING COMPANY LISTED ON PAGE 1 OF THIS BOOKLET.

HOW TO ARM YOUR SECURITY SYSTEM

To turn the security system on, close all of the protected doors and windows. The green "SECURE" light on the keypad control will become illuminated when all of the protected areas and sensors are secure. If any of the zones are isolated, a sensor in that zone can be violated without affecting the "SECURE" light. The security system will not arm if the "SECURE" light is not illuminated. With the "SECURE" light on, you may arm the security system with your master code or one of the auxiliary codes. Each time a key is pressed on the keypad control, a short tone (beep) will sound. If the keypad sounds three times after the code entry, it is an indication that the code has not been accepted. Press the [#] key (reset) and re-enter a valid code. If the keypad control sounds continuously after code entry, it is an indication that the "POWER" light is off, or the "FIRE" and/or "TROUBLE" light is on. The keypad sounder can be silenced by re-entering your four digit code. If the "POWER" light is out, you should restore power to the system if possible. If the "FIRE" light is on, you should press the [#] key (reset), and wait 10 seconds. If you are unable to correct the above conditions, you should contact the installing company listed on page 1 of this booklet for service. When the security system has accepted a valid code, the red "ARMED" light will illuminate indicating that the system has been turned on. If you choose to leave the protected area, you must exit within the designated exit delay time. If you choose to stay within the protected area, insure that all interior zones which may be tripped by your movement are isolated.

HOW TO ISOLATE ZONES

To isolate any of the zones 1-32, disarm the control and press (*), zone number(s) to be isolated, and (*). Zone number less than 10 must be preceded by a zero (for example 01, 02, 09). Zones cannot be isolated or deisolated if the control is armed. When the security system is disarmed all isolated zones will be deisolated. As isolated zones are not protected, this procedure should only be given to authorized persons. For example to isolate zones 1, 5, 10, and 15, the sequence would be as follows.

[*] - [0]-[1] - [0]-[5] - [1]-[0] - [1]-[5] - [*]
Zone 01 Zone 05 Zone 10 Zone 15

AUTOMATIC ISOLATE OPTION

If this box is checked, the "Automatic Isolate" feature has been selected by your installing company. With this feature enabled, your security system can be armed with any or all zones violated. Any violated zone which does not return to a normal status by the end of the exit delay time will be automatically isolated. Caution should be used when arming your security system to ensure that zones necessary for minimal or desired protection levels are not violated, and thus isolated from the security system.

GROUP ISOLATE OPTION

If this box is checked, the "GROUP ISOLATE" option has been selected by your installing company, and if you wish to isolate zone(s) _____ designated as "GROUP ISOLATE" zones, you may do so by pressing the (*) key during the exit delay. Once group isolate zones have been isolated, they will remain isolated until the system is disarmed.

QUICK-ARM FEATURE

If this box is checked, your security system will have the [] "QUICK-ARM" code programmed. This feature will allow you to arm the security system by pressing one, pre-designated key on the keypad control. This "QUICK-ARM" code is for **ARMING ONLY**, and will not disarm the security system. This makes it ideal for a maid code, babysitter code, etc. This code can only be programmed and/or changed by your installing company.

ENTRY-GUARD ARMING

If this box is checked, your installing company has selected the "Entry-Guard" feature for your Security System. "Entry-Guard" allows "At Home" system arming for added security. To use this feature, press the selected [] key on the Keypad Control. After 5 seconds the "ARMED" and "PARTIAL" lights on the Keypad Control will be illuminated, indicating that your Security System has entered the "Entry-Guard" mode. When selected, the following listed zones will be isolated _____, and all other zones will cause the Keypad buzzer only to sound for _____ seconds before the system siren is activated and the alarm signal is transmitted to a Base Station (if your Security system is monitored by a Base Station). This allows you to reset your Security System prior to it reaching an emergency stage in the event of an accidental zone violation. To turn this feature off, enter your four digit code at the Keypad Control. The "Armed" and "Partial" lights on the Keypad Control will go out and the Security System will be in a full disarmed condition.

HOW TO DISARM YOUR SECURITY SYSTEM

When you enter the protected area through one of the designated entry/exit doors, the keypad control will sound a continuous tone (beep) for the duration of the entry delay time, or until you enter a valid code. After a valid code has been entered, the red "ARMED" light will turn off, and the tone will stop. The security system is now DISARMED (off). If a valid code is not entered before the end of the entry delay time, an alarm will occur. (NOTE: IF THE RED "ARMED" LIGHT IS FLASHING DURING THE ENTRY DELAY, THE ALARM SYSTEM HAS BEEN ACTIVATED IN YOUR ABSENCE. LEAVE THE BUILDING IMMEDIATELY TO CALL YOUR ALARM COMPANY AND/OR THE POLICE.)

MANUAL PANIC/HOLD-UP ALARM

When the star [*] and hatch [#] key are pressed at the same time for one second, the local audible alarm will sound. If your system is connected to a monitoring centre an emergency report could be transmitted to that centre. These keys should only be pressed in an emergency situation requiring immediate response by law enforcement personnel.

PLEASE NOTE: Some Panic/Hold-up alarms are programmed to be silent at the protected building while reporting an alarm to the monitoring centre. Check with your installing company to determine how your Security System will respond to the Panic/Hold-up input.

MANUAL FIRE ALARM

If the "MANUAL FIRE" option has been selected by your installing company, you can activate the steady siren by pressing the [1] and [3] keys at the same time for one second. If your system is connected to a monitoring centre, an emergency report could be sent to that centre. These keys should only be pressed in an emergency situation requiring response by fire department personnel.

FIRE ZONE

When local fire codes allow, your security system may have one or more zones configured as a "FIRE" zone. When this option is selected, and approved heat or smoke detectors are attached to the selected zones, a steady audible siren can be initiated from the security system. You should familiarize yourself and your family or staff with this sound and follow an evacuation plan if this fire warning sound is heard (see page 8 for assistance in formulating an evacuation plan). To silence the audible fire alarm, enter a valid code. To reset the "FIRE" light and/or smoke detectors, press the [#] key (reset). After 10 seconds, the "FIRE" light should extinguish and the light on the affected smoke detector should go out. If you are unable to reset the "FIRE" light or smoke detector after all smoke has cleared, you should immediately call the service phone number in the front of this booklet.

PROGRAMMING ARM/DISARM CODES

Your security system can be armed and disarmed by the Master code (User Code #1) and up to 28 auxiliary codes. All codes must have 4 digits. These Auxiliary codes are individually numbered from 2 to 14 and 16 to 30 (User code 15 is reserved for the optional Duress code). If Auxiliary codes are desired, they must be programmed individually. Only persons knowing the Master code can assign or change auxiliary codes (see programming Auxiliary codes below).

CHANGING THE MASTER CODE - The master code is user code #1, and must be referred to by its number. For example, if the Master code is [1]-[2]-[3]-[4] and you want to change it to [5]-[3]-[4]-[2], the sequence would be as follows: Press [C]-[0]-[1] (this enters programming for user #01), then [1]-[2]-[3]-[4] (the old Master code), then [5]-[3]-[4]-[2] (new Master code). The entire sequence would consist of pressing the 17 keys shown below.

[C]-[0]-[1] - [1]-[2]-[3]-[4] - [5]-[3]-[4]-[2]
(Code 01) (Master Code) (New Code)

PROGRAMMING AUXILIARY CODES - In order to program Auxiliary Codes you must know the Master code. As stated earlier, each auxiliary code has its own unique number from 2 to 14, and 16 to 30 and must be referred to by its number. It is programmed much like the Master Code. For example, to program Auxiliary user code #12, the sequence would be as follows:

[C]-[1]-[2] - [5]-[3]-[4]-[2] - []-[]-[]-[]
(Code 12) (Master Code) (New Code)

REMOVING AUXILIARY CODES - To remove an Auxiliary user code, simply program that code as [*][*][*][*]. For example, to remove user code #24, the sequence would be as follows:

[C]-[2]-[4] - [5]-[3]-[4]-[2] - [*]-[*]-[*]-[*]
(Code 24) (Master Code) (New Code)

DURESS CODE

Your security system may include a "DURESS" option. If so, this code may be programmed to send a special message to the central monitoring station if you are forced to arm or disarm your security system against your will. Check with your Installing/Service company to see if your system has a "DURESS" option.

TURNING ON THE CHIME FEATURE

If this box is checked, your Security System will operate in the "CHIME" mode to allow the monitoring of pre-designated zones while the Security system is not armed. While in the "CHIME" mode the opening of any of these zones will produce a 1 second tone on the keypad control.

To activate this feature, press the "CHIME" digit []. This digit has been selected by your installing company. In five seconds a tone will sound indicating that this feature has been activated/deactivated. Repeat this procedure to turn the "CHIME" feature off.

AUDIBLE ALARM SOUNDS

FIRE Steady Siren

INTRUSION & PANIC Yelp siren

KEYPAD CONTROL LIGHT INDICATORS

ARMED RED: On when system is armed; off otherwise. Blinks as alarm memory if alarm was activated during arming cycle.

SECURE GREEN: On when all zones are secure and/or isolated and the system is ready to arm; off otherwise.

PARTIAL RED: On when "Entry-Guard" is on; off otherwise.

POWER RED: On when AC power is on; off otherwise. Blinks when the system standby battery is low.

FIRE RED: On when a fire zone has been activated; off otherwise.

TROUBLE RED: On when a fire zone has been in trouble; off otherwise.

KEYPAD CONTROL TONES (BEEPS)

A sounder is built into the keypad control and may sound for one of the following reasons:

- Beeps for all keypresses.
- Beeps continuously during the Entry delay time, or Entry-Guard delay time.
- Pulses when a day zone is violated and the system is disarmed, or a FIRE zone has a trouble condition, or when the armed status changes and the AC power is off, or a FIRE/TROUBLE condition exists. When pulsing, it may be silenced by entering a valid code. The Armed state of your security system will not change when you enter a code to silence a pulsing sounder.
- 3 beeps for trying to arm with the "READY" light off.
- Beeps 1 second for the "CHIME" feature.
- Beeps 1 second at the end of the exit delay.

RESETTING YOUR SECURITY CONTROL CENTER

In the event of a system malfunction in the Security Control Center, press the [#] (reset) key on the keypad control. This should reset the code sequence and restore normal operation. If the problem persists, call the service number located on page 1 of this booklet for service.

SPECIAL INSTRUCTIONS FOR MULTI-AREA SYSTEMS

If your installing company has selected the MULTI-AREA option for your security system, it may be possible to arm different different areas of your building independently from each other. The system may have up to four independent areas. To access another area, through the keypad, a special "Change Area Code" will be required. To change the current area being viewed on the keypad control, (assuming the "Change Area Code" is [4]-[3]-[2]-[1]), press [C]-[9]-[9], (this tells the control that you want to access another area), [4]-[3]-[2]-[1] (the "Change Area Code"), followed by the area number to be viewed (1 to 4). For example, to change the keypad to view area 3, the sequence would be as follows:

[C]-[9]-[9] - [4]-[3]-[2]-[1] - [3]

Once the "Change Area Code" has been entered, other areas can be viewed by pressing [C]-[9]-[9] followed by the appropriate area number. The following examples will show all areas.

Entering [C]-[9]-[9] - [4]-[3]-[2]-[1] - [4] will change to Area 4.

Entering [C]-[9]-[9] - [3] will change to Area 3.

Entering [C]-[9]-[9] - [2] will change to Area 2.

Entering [C]-[9]-[9] - [1] will change to Area 1.

ADDITIONAL SYSTEM NOTES

EMERGENCY EVACUATION PLANS

An emergency evacuation plan should be established for an actual fire alarm condition. For example, the following steps are recommended by the National Fire Protection Association and can be used as a guide in establishing an evacuation plan for your building.

Draw up a floor plan of your home. Show windows, doors, stairs, and rooftops that can be used for escape. Indicate each occupant's escape routes. Always keep these routes free from obstruction.

Determine two means of escape from each room. One will be the normal exit from the building. The other may be a window that opens easily. An escape ladder may have to be located near the window if there is a long drop to the ground below.

Set a meeting place outdoors for a headcount of the building occupants.

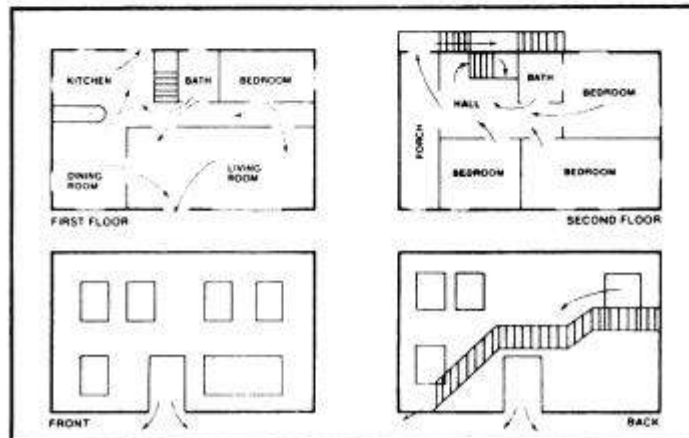
Practice escape procedures. In a home, sleep with bedroom door closed; this will increase your escape time. If you suspect fire, test the door for heat. If you think it is safe, brace your shoulder against the door and open it cautiously. Be ready to slam the door if smoke or heat rush in. Practice escaping to the outdoors and meeting in an assigned spot.

NOTE: After the installation of your Security System has been completed, notify your local Fire and Police Departments to give them your name and address for their records.

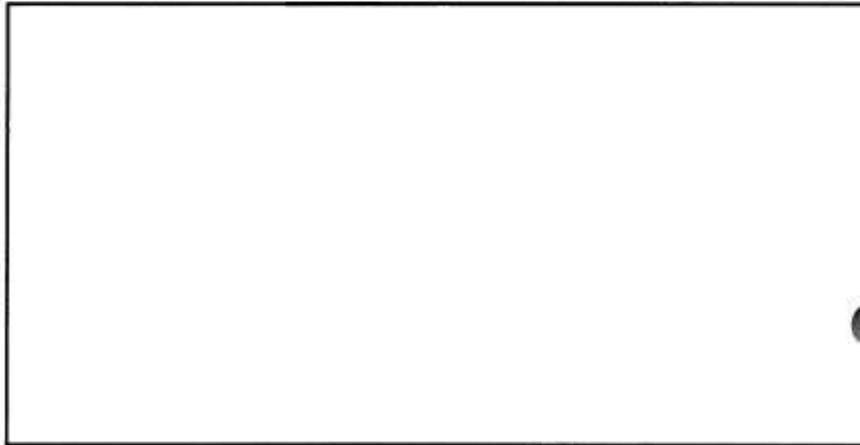
Early warning fire detection is best achieved by the installation of fire detection equipment in all rooms.

This equipment should be installed in accordance with the National Fire Protection Association's Standard 74. For additional information write the National Fire Protection Association, Batterymarch Park, Quincy, MA 02269.

The following are examples of evacuation plans. A plan unique to your home or business should be drawn and memorized by each occupant.



FOR SERVICE CONTACT:



300 SERIES USERS MANUAL
300UB97 REV B (7-25-97)

D & W Printing, Inc.